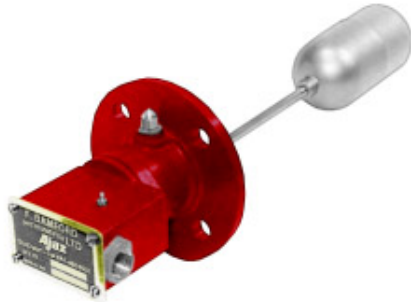




Series **AJ** INDUSTRIAL LEVEL SWITCHES



FLOAT LEVEL

- Designed for side mounting directly onto side of Tank or Vessel
- Arm length to suit your specification
- Float can be polypropelene or stainless steel



SUMP LEVEL

- Totally self contained
 - Visual indication of level
 - Direct or remote mounting
 - Non ferrous construction
- Rugged construction, Vibration and shock resistant

The Bamford Ajax AJ series of level switches are a long established and successful range of ruggedly constructed devices for automatic and reliable protection against dangerously high or low liquid levels in a tank, container or reservoir. The sump Level Alarm is ideal for indicating low lubrication oil in a sump or leakage from fuel injecting piping.

On both models of the weather resistant switch housing contains a standard precision snap action single pole double throw micro switch which can be factory set or field adjusted as required. The contacts on the Intrinsically Safe version are silver plated noble metal. The float mechanism operates on eccentrically mounted pivots and actuates, via a metallic bellows seal, an externally adjustable micro switch. The standard switch housing is weather resistant but ATEX certified switchboxes (see leaflet [XP3](#) & [XP4](#)) are also available.

F. Bamford (Instruments) Ltd.

Ajax Works,
Whitehill,
Stockport, SK4 1NT. United Kingdom.

Telephone: 0161-480 6507

Fax: 0161-474 7990

Web: www.bamfordinstruments.com

Email: sales@bamfordinstruments.com

Specifications

Mounting Connections Sump level:

4 holes 7mm diameter through lugs on float housing.

Fluid connections 3/4" BSP female

Float level: 40mm N.B.

BST 'D' (Standard). Alternative flanges available.

Maximum Working Pressures

Sump Level: Atmospheric

Float Level: 10 Bar G (145 P.S.I.G.)

Maximum Working Temperature:

Both models 95°C

Switch Housing:

Both Models Weather resistant.

Conduit Entry:

Both models M20 X 1.5 Pitch.

Materials of Construction

Cast wetted parts: (Both models)

Gunmetal BS EN 1982 LG2

SWITCH RATING - Both models

VOLTS	DC		AC	
	RES	IND	RES	IND
30	10A	10A	10A	10A
125	0.5A	0.07A	10A	10A
250	0.25A	0.03A	10A	10A
440	*	*	*	*

* Alternative switches may be fitted for 440 volts or intrinsically safe circuits.

Wetted Parts: (Both Models)

Manganese Bronze BS 2874 CZ114

Stainless Steel 316

Phosphor Bronze PB1 BS 2870.

Switch Housing: (Both Models)

Aluminium Bronze BS EN 1982 AB2.

Window/Joint: (Sump Level)

Toughened Soda Lime BS 3463 /

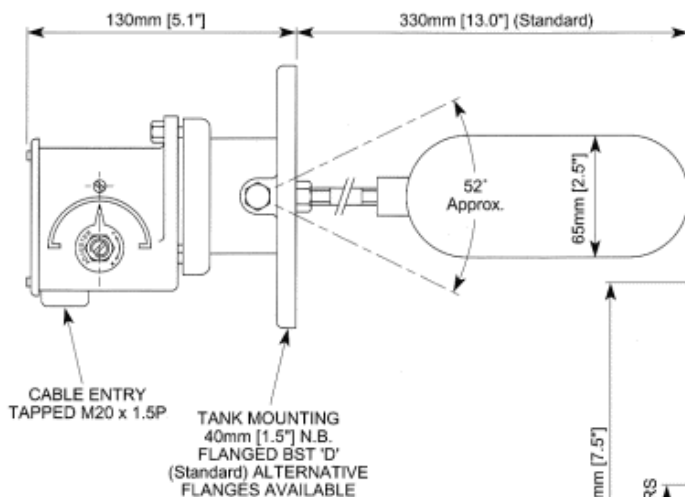
N.A.F. BS 7531 Grade Y.

DIMENSIONAL DRAWINGS



Certificate No: FM 13215

FLOAT LEVEL ALARM



SUMP LEVEL ALARM

