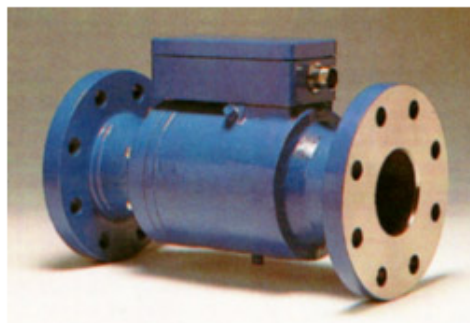




Series CMS

SMART ELECTRONIC FLOWMETERS



- Ability to read flow, pressure and temperature in one unit
- High turn down ratio 100:1
- Accuracy +/-1%
- Compact in-line design
- Rugged Construction
- High pressure rating
- Local or remote readout of flow and total
- Low maintenance

The Ajax Smart CMS2000 electronic flowmeter is ideally suited for measurement of fuel oil, hydraulic circuits, gases and water flows. It has a high accuracy, wide turndown ratio and good repeatability. It is compact, very strongly constructed, can withstand high pressures and temperatures. The design is based on a spring loaded variable orifice in which the flow causes a sharp edged plunger to move within a female cone. It utilizes a plunger containing a magnet, the position of which is sensed by a 'Hall Effect' device.

The flowrate is proportional to the movement of the plunger, so giving an output proportional to the flowrate. The built-in micro processor electronics can be configured to correct for density, and can calculate mass flow and total flow as well as flow rate. The flowmeter has a built-in temperature sensor and can be fitted with a pressure sensor, all in the same unit. The board has flexible output options and all the signals can be transmitted as analogue or RS485 digital outputs, thus allowing up to 30 flowmeters to be connected to a computer on a single 4 wire loop.

F. Bamford (Instruments) Ltd.

Ajax Works,
Whitehill,
Stockport, SK4 1NT. United Kingdom.

Telephone: 0161-480 6507

Fax: 0161-474 7990

Web: www.bamfordinstruments.com

Email: sales@bamfordinstruments.com

Specifications



Certificate No: FM 13215

Sizes: 1", 1½", 2", 2½", 3", 4", 6", 8", 10", 12", 16", Nominal Bore

Flange: BS4504 PN40, BS10 Table H, ANSI B. 16.5 Class 150 or Class 300

Working Pressures: up to 90 BAR G depending on size/model

Max. Temperature: 75 deg C

Pressure Drop at Maximum Flow: 0.25 BAR

Body Material: Carbon Steel BS 3100 A1 or Stainless Steel 316

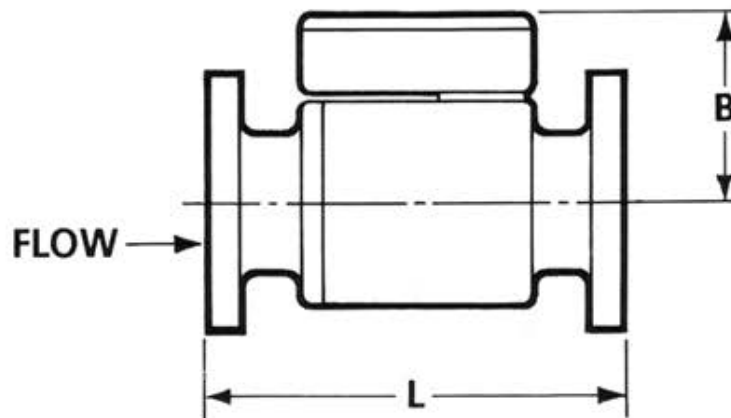
Wetted Parts: Stainless Steel 316

Flow Computer Outputs: Analogue 4-20 mA : Digital RS485

Other sizes and special units are available on request.

The company's policy is one of continuous product development and we reserve the right to modify the specification without notice.

Dimension Drawing



| SIZE | TYPE | L | B | Flow Range @ .25 BAR - L / min |
|------|------|------|-----|-----------------------------------|
| 1" | S | 204 | 90 | 2.1 - 205 |
| 1½" | S | 258 | 98 | 3.4 - 339 |
| 2" | C | 260 | 115 | 6.3 - 628 |
| 2½" | C | 315 | 125 | 10.0 - 1010 |
| 3" | C | 355 | 135 | 13.7 - 1379 |
| 4" | C | 440 | 160 | 23.7 - 2368 |
| 6"L | F | 740 | 150 | 20.4 - 2038 |
| 6"H | F | 740 | 198 | 57.1 - 5712 |
| 8"L | F | 840 | 170 | 24.8 - 2484 |
| 8"H | F | 840 | 220 | 83.7 - 8371 |
| 10"L | F | 1180 | 198 | 35.9 - 3587 |
| 10"H | F | 1180 | 265 | 128.5 - 12852 |
| 12"L | F | 1520 | 223 | 41.4 - 4165 |
| 12"H | F | 1520 | 315 | 183.3 - 18329 |
| 16"L | F | 1620 | 265 | 91.4 - 9144 |
| 16"H | F | 1620 | 365 | 299.3 - 29931 |