

GENERAL CHARACTERISTICS

Built entirely of PVDF, its use is particularly indicated for the chemical and medical electronics industries. The sensor consists of a turbine rotor that enters in rotation with the passage of fluid. The fluid is forced into a helical motion by a special conveyor. The speed of rotation is proportional to the flow. The measurement is detected by an IR sensor external to the flow chamber. The particular shape of the turbine and of the flow conveyor determines a high measurement precision and a repeatability of 0.1%.

- Construction in PVDF.
- Hermetic separation between flow chamber and IR sensor.
- High accuracy and repeatability of measurement.
- Mechanics with interchangeable cartridge (KTI) on request.



TECHNICAL DATA

Tab.1

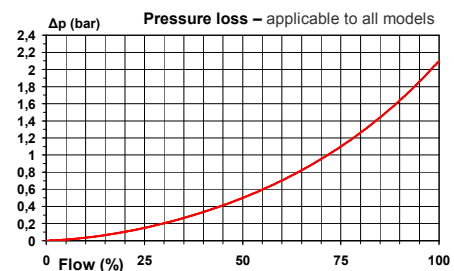
Type	Q max l/min	Measuring range l/min H ₂ O	Filter µm	KTI	Pulses liter	Frequency Hz	Accuracy	Repeatability	Pressure	Temperature	Viscosity	Materials	KTI option
10	2,0	0,1 - 2,0	-	•	36000	60 - 1200	10 Series ± 1%	± 0,1% of measured value	6 bar max.	- 40 / +85 °C	15 cSt max.	PVDF	• Interchangeable mechanics
20	9,0	0,3 - 9,0	60	•	8000	40 - 1200	30 Series ± 3%						
30A	15,0	0,5 - 15,0	60	•	3200	26,6 - 800							
30B	15,0	0,5 - 15,0	60	•	1050	8,9 - 266,7							
40	30,0	1,0 - 30,0	60	-	1200	20 - 600							
50	75,0	2,5 - 75,0	60	-	450	18,7 - 562							
60	120,0	4,0 - 120,0	60	-	225	15 - 450							

ELECTRICAL DATA

Tab.2

Power supply	5 ÷ 12 Vdc	6 ÷ 33 mA	-
Output	Open collector		
Signal	Frequency	Square wave	0
		Sinusoidal wave	5
Max. load	500 ohm		-
Connection	1 m cable	Other lengths on request	1M
Protection	IP65 - Encapsulated electronics		

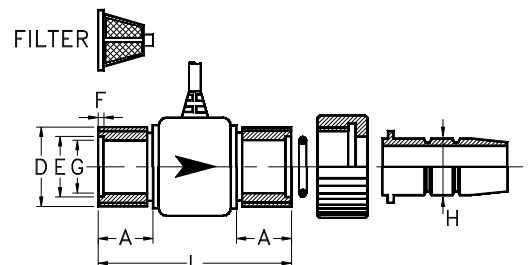
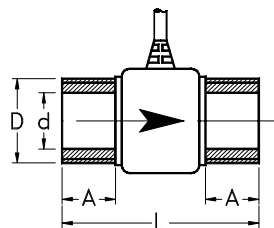
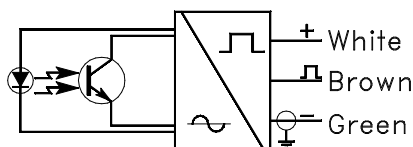
PRESSURE LOSS



DIMENSIONS AND WIRING

Tab.3

Type	B BSP N NPT Dimensions mm				H Connections with hose adapters Dimensions mm								
	A	D	d	L	Type	A	D	E	F	G	H	I	L Tot.
10	9,5	1/4"	6,5	39	10	9,0	M12x1,5	8,7	1,5	6,5	6,5	39	96
20	12,7	1/2"	13	47	20	12,0	M20x2	16,0	1,8	9,0	9,0	43	112
30A	12,7	1/2"	13	47	30A	12,0	M20x2	16,0	1,8	12,0	12,0	43	116
30B	12,7	1/2"	13	47	30B	12,0	M20x2	16,0	1,8	12,0	12,0	43	116
40	18,5	3/4"	17	63	40	16,0	M27x2	21,0	2,3	16,0	16,0	57	136
50	24,5	1.1/4"	29	80	50	16,5	BSP 1"	29,4	1,6	24,5	19,5	80	182
60	24,5	1.1/4"	29	80	60	16,5	BSP 1"	29,4	1,6	24,5	24,5	80	183



NOMENCLATURE

AFM	10 0	2 0	H	1M	KTI	Name
•						Tab.1-2 Precision (Series) and Signal
	• •					Tab.1-3 Type / dimensions
		•				Tab.3 Process connections
			•			Tab.2 Cable length
				•		Tab.1 Mechanics with interchangeable cartridge (KTI) option