

GENERAL CHARACTERISTICS

Level controls with 2 electrical contacts, reliable, compact and easy to install. Designed to offer a range of level switches to meet the request for a cheap monitoring of the level in small tanks.

The principle of operation of these instruments is based on the drive of 2 reed contacts, located inside of the measuring rod, by a magnetic float.

The only moving elements are the floats that move, for hydrostatic thrust, along the measuring rod; this guarantees extreme ruggedness and a limited need of maintenance.



- Connection: **Brass - Aluminum - PVC**
- Closed cell float.
- Hermetic and replaceable electrical contact.
- Operating ambient temperature -30 /+55 ° C - 90% R.H.
- Easy mounting, threaded or flanged.
- Minimum degree of protection IP65.

TECHNICAL DATA

Tab.1

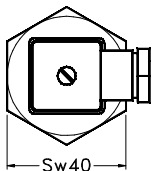
Description	Code								
	B45								
Float	SPANSIL –Butadiene Acrylonitrile Copolymer closed cells								
	∅ 30 x 45 mm		S.G. 0, 35		Max. pressure 20 Bar				
Rod length L0 mm	0200	0250	0300	0350	0400	0450	0500	O. L0	
Process connection	Threaded		1" UNI 228/1 male thread		SW 40		Brass	25GO	
							Anodized aluminium	25GD	
	Flanged		Double fixing (2 or 3 holes)		∅ 55 mm		PVC	25GV	
							Brass	FOPX	
							Anodized aluminium	FDPX	
							PVC	FVPX	
Electrical contact	SPST	N.C.	N.O.	Overturning the float of 180°	300 VAC 350 VDC	50W	70VA	0,5A 0,7A	3
Electrical output	DIN 43650 Plug					IP 65			S1
Max. temperature °C	105 °C								L
Sealing gasket	NBR flat gasket anti-oil								1

DIMENSIONS mm.

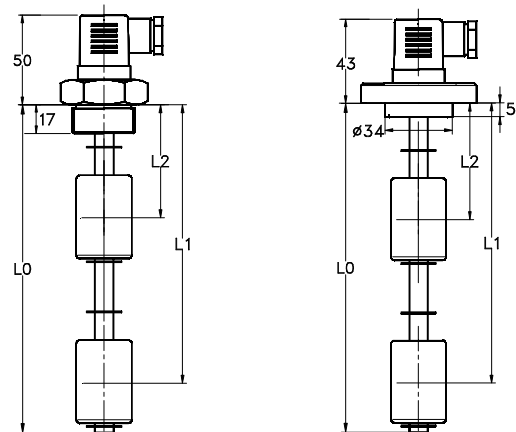
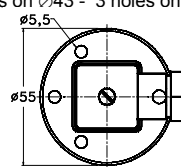
Tab.2

	L0						
	200	250	300	350	400	450	500
L2	65	65	65	75	75	75	85
L1	165	215	265	315	365	415	465

Threaded version 1" UNI-228/1



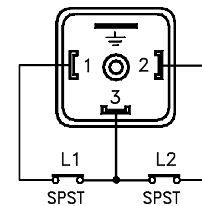
Flanged version
2 holes on ∅43 - 3 holes on ∅42



WIRING

Tab.3

C	Common	Common wired contacts
2	NC L1	Contact status in no level condition
2	NC L2	



NOMENCLATURE

M2	B45	3	0500	O	FOPX	S1	L	1	C22
•									
	•								
		•							
			•						
				•					
					•				
						•			
							•		
								•	
									•
									•

Type
Tab.1 Float
Tab.1 Electrical contact
Tab.2 Total length = L0 mm.
Tab.1 Rod material
Tab.1 Process connection
Tab.1 Electrical output
Tab.1 Temperature class
Tab.1 Sealing gasket
Tab.3 Wiring