

GENERAL CHARACTERISTICS

For all applications where it is necessary to monitor or perform pressure measurements in industrial plants.

Rugged construction for non-corrosive liquids, sensing element bourdon tube. Process connections radial or axial.

- **ABS enclosure.**
- Plastic white dial.
- Bourdon tube measuring element made of copper alloy.
- Degree of protection IP43



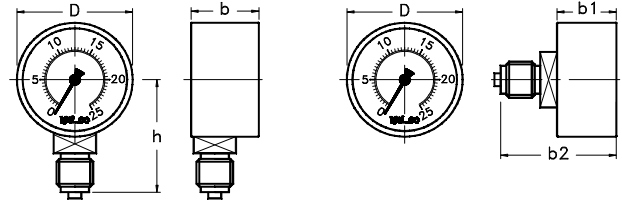
PRESSURE RANGES Tab.1

| Measuring range Bar | Code | Ø mm. | | | | |
|------------------------|--------|-------|----|----|----|-----|
| | | 40 | 50 | 63 | 80 | 100 |
| -1 - 0 | V001-0 | | | | | |
| 0 - 1 | 0001-0 | | | | | |
| 0 - 1,6 | 0001-6 | | | | | |
| 0 - 2,5 | 0002-5 | | | | | |
| 0 - 4 | 0004-0 | | | | | |
| 0 - 6 | 0006-0 | | | | | |
| 0 - 10 | 0010-0 | | | | | |
| 0 - 12 | 0012-0 | | | | | |
| 0 - 16 | 0016-0 | | | | | |
| 0 - 25 | 0025-0 | | | | | |
| 0 - 40 | 0040-0 | | | | | |
| 0 - 60 | 0060-0 | | | | | |
| 0 - 100 | 0100-0 | | | | | |
| 0 - 160 | 0160-0 | | | | | |
| 0 - 250 | 0250-0 | | | | | |
| 0 - 315 | 0315-0 | | | | | |
| 0 - 400 | 0400-0 | | | | | |

Dual scale on request: bar / psi

TECHNICAL DATA Tab.2

| Description | | | Code |
|---------------------|-----------------|--------------|------------|
| Measuring element | Bourdon tube | Copper alloy | BG |
| Dial | Dry scale | Single scale | N1 |
| | | Dual scale | N2 |
| Housing | Black ABS | IP43 | - |
| Window | Polycarbonate | | |
| Working temperature | -20 / +80 °C | | 080 |
| Accuracy | Standard 2,5% | | 25 |
| | On request 1,6% | | 16 |



| Ø | Dimensions [mm] | | | | | Weight [g] |
|-----|-----------------|----|----|----|-----|------------|
| | h | b | b1 | b2 | D | |
| 40 | 40 | 24 | 24 | 42 | 42 | 140 |
| 50 | 45 | 26 | 26 | 46 | 51 | 160 |
| 63 | 50 | 26 | 26 | 45 | 63 | 190 |
| 80 | 65 | 34 | 34 | 68 | 84 | 400 |
| 100 | 88 | 48 | 48 | 86 | 114 | 650 |

PROCESS CONNECTIONS Tab.3

| Dimensions | | | Male thread | | Type | |
|------------|----------------|------------|-------------|------------|--------|-------|
| 06 | 08 | 15 | G | N | R | A |
| 1/8" | 1/4" | 1/2" | UNI 228/1 | NPT | Radial | Axial |
| Ø 40 | Ø 40 - 63 - 80 | Ø 80 - 100 | | On request | | |

NOMENCLATURE

| MAV | 63 | 0100-0 | 08GR | BG | N1 | 080 | 25 | |
|-----|----|--------|------|----|----|-----|----|---|
| • | | | | | | | | Pressure gauge type |
| | • | | | | | | | Tab.1 Diameter Ø mm |
| | | • | | | | | | Tab.1 Measuring range |
| | | | • | | | | | Tab.3 Process connections dimensions and type |
| | | | | • | | | | Tab.2 Measuring element and material |
| | | | | | • | | | Tab.2 Scale - Dial |
| | | | | | | • | | Tab.2 Max. working temperature |
| | | | | | | | • | Tab.2 Accuracy |

| | | | |
|--------------------|--|--|---------|
| ACCESSORIES | Flange - Bracket - Taps with pressure gauge holder | Leaflet VISOBAR pressure gauge accessories | Pag.228 |
|--------------------|--|--|---------|